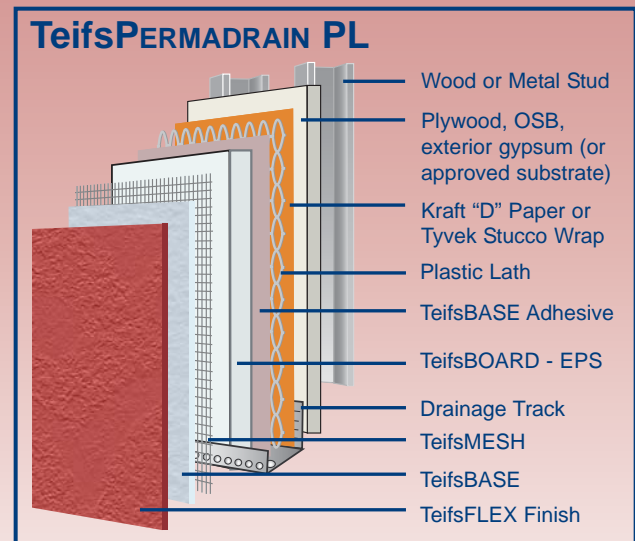
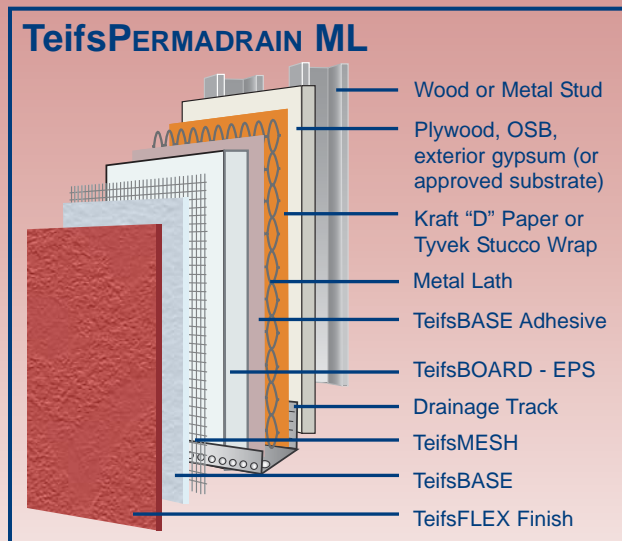
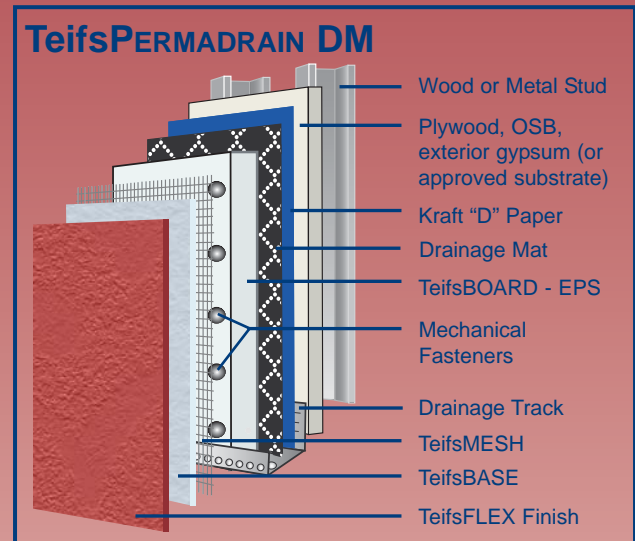
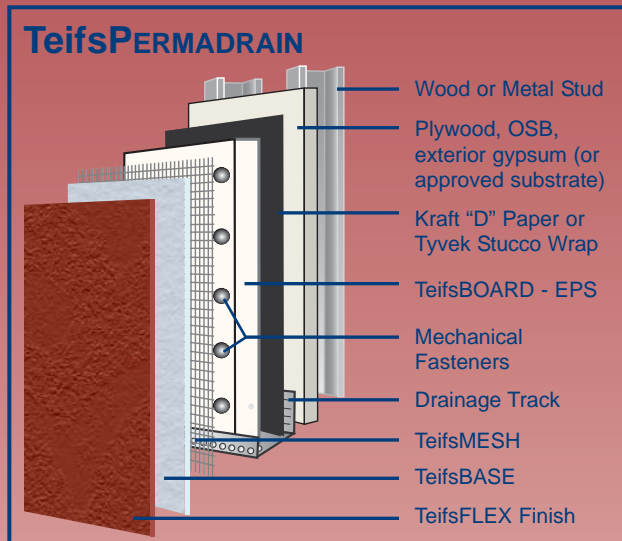


Teifs WALL SYSTEMS

TeifsPERMADRAIN WALL SYSTEM

The PERMADRAIN® Systems are popular Type V EIFS walls with unique moisture drainage, moisture repellance and high wind resistance features. The four companion systems offer choices in drainage techniques and wind resistance. Should any moisture penetrate the outer wall of any of the systems it will channel to the drainage track, which allows escape to the outside.



www.teifs.com

220 Burluson, San Antonio, TX 78202
800-358-4785 Fax: (210) 472-2946

ParexLahabra Inc. Corporate Office
4125 E. La Palma Ave, Suite 250, Anaheim, CA 92807
Phone: (714) 778-2266 Fax: (714) 774-2074

Product T141 - 12/06 © ParexLahabra

Member Of:

